



UNIVERSIDADE FEDERAL DO PARÁ
INSTITUTO DE CIÊNCIAS BIOLÓGICAS
PROGRAMA DE PÓS-GRADUAÇÃO EM FARMACOLOGIA E BIOQUÍMICA

VICTÓRIA MAE TSURUZAKI SHINKAI

**EFEITOS CITOTÓXICOS E MECANISMO DE AÇÃO DA
ELEUTERINA ISOLADA DE *Eleutherine plicata* EM
MODELO *IN VITRO* DE CÉLULAS C6**

BELÉM-PA

2024

UNIVERSIDADE FEDERAL DO PARÁ
INSTITUTO DE CIÊNCIAS BIOLÓGICAS
PROGRAMA DE PÓS-GRADUAÇÃO EM FARMACOLOGIA E BIOQUÍMICA

**EFEITOS CITOTÓXICOS E MECANISMO DE AÇÃO DA
ELEUTERINA ISOLADA DE *Eleutherine plicata* EM
MODELO *IN VITRO* DE CÉLULAS C6**

Autor(a): VICTÓRIA MAE TSURUZAKI SHINKAI

Orientador(a): Prof.^a Dr.^a JOSÉ LUIZ MARTINS DO NASCIMENTO

Documento de Dissertação apresentada
ao Programa de Pós-graduação em
Farmacologia e Bioquímica do Instituto
de Ciências Biológicas da Universidade
Federal do Pará como requisito para a
obtenção do título de Mestre em
Farmacologia e Bioquímica.

BELÉM-PA

2024

Dados Internacionais de Catalogação na Publicação (CIP) de acordo com ISBD
Sistema de Bibliotecas da Universidade Federal do Pará
Gerada automaticamente pelo módulo Ficat, mediante os dados fornecidos pelo(a) autor(a)

T877i Tsuruzaki Shinkai, Victória Mae.
Efeitos citotóxicos e mecanismo de ação da eleuterina isolada
de Eleutherine plicata em modelo in vitro de células c6/ Victória
Mae Tsuruzaki Shinkai. — 2024.
25 f. : il. color.

Orientador(a): Prof. Dr. José Luiz Martins do Nascimento
Dissertação (Mestrado) - Universidade Federal do Pará,
Instituto de Ciências Biológicas, Programa de Pós-graduação em
Farmacologia e Bioquímica, Belém, 2024.

1. Eleutherine plicata; glioma; citotoxicidade. I. Título.

CDD 571.6

DEDICATÓRIA/AGRADECIMENTOS

Há uma frase que o meu pai sempre diz para mim desde pequena: “Filha, vivemos várias vidas em uma vida só.” Ao longo dos anos, dependendo de qual fase estive, essa passagem possuiu um significado diferente e totalmente ligado ao momento em que eu vivi. Essa frase já foi a construção do caminho à Universidade, realizada por uma menina de 15 anos determinada e repleta de sonhos, incansável com o seu objetivo-fim de ser aprovada na Universidade em um dos cursos mais concorridos. Também já foi uma jovem aprendiz a cientista, curiosa, totalmente tomada pela vontade de aprender o universo que existe dentro de um Laboratório. Com o tempo, esse lugar se tornou a minha casa, na mesma definição que temos de Lar. Lá foi onde a vida científica deu seu pontapé inicial, repleto de experimentos, cálculos, reações, bioquímica e acima de tudo, paixão, aquilo que acende o coração e faz a vida pulsar. E assim foi ao longo dos anos de faculdade, com seus altos e baixos, encantos e decepções, mas sempre com muita vontade de tornar realidade um novo sonho: o primeiro artigo publicado. E dessa maneira iniciou-se o primeiro ano de graduação, o Mestrado, decisão tão natural e tão acertada em um coração repleto de angústias sobre o futuro. O melhor desse ano, com certeza, foram as tardes de Setembro/Outubro sentadas ao lado do meu Orientador discutindo cada parágrafo do artigo que será lido em breve. E com tudo encaminhado, chegamos a este momento, a escrita da dissertação. Assim como nesse texto, o caminho foi longo, mas extremamente deleitoso. Eu tenho tanto a agradecer a tantas pessoas que tornaram esse sonho verdade e que possibilitaram que eu vivesse a minha verdadeira paixão como pessoa. Primeiramente, aos meus pais, meu berço de amor e meu alicerce, cada passo dado só é possível por ser fruto desse amor. Aos meus irmãos e minha batchan, minhas maiores riquezas. Aos meus amigos tão amados, companheiros, é muito especial partilhar a vida com vocês. Ao meu grande amor, você é o meu maior presente, nós e o nosso gatinho (Freud). A todos os colegas de laboratório que me ajudaram a ser a pesquisadora que eu sou hoje e me ensinaram o caminho de tantos experimentos, essa é a rotina que mais sinto saudade. À professora Edilene, sempre com considerações fundamentais a todos os trabalhos que desenvolvi no LNMC, e pessoalmente pela amizade construída ao longo dos anos e por me receber em sua casa com tanto carinho. À professora Barbarella, que me acolheu e cuidou de mim como filha, permitindo que tudo fosse possível, a referência de lar que o Laboratório ganhou para mim surgiu com a senhora, professora. A todos os professores que contribuíram com a minha caminhada, prof. Chubert, prof. Alejandro, prof. Hamoy, prof. Gabriela, prof. Marcus, prof. Maria Elena, cada um de vocês construiu um pedaço quem eu sou hoje. Por fim, o agradecimento mais especial a quem foi o início de tudo. Obrigada, professor José Luiz, por abrir as portas do seu laboratório, da sua casa e por ter construído a pesquisadora que eu sou hoje. Essa dissertação, esse trabalho e, principalmente, a minha jornada como cientista ao longo desta vida sempre levarão o seu legado em frente. O meu maior orgulho é ter sido (e ser) sua aluna.

RESUMO

O glioblastoma multiforme (GBM) é o tumor primário maligno mais prevalente do sistema nervoso central (SNC). As células de GBM são caracterizadas por rápida proliferação e migração. Há uma forte demanda por novas terapias para o tratamento desse tumor, em virtude das limitações terapêuticas atuais. Derivados de quinona de plantas têm recebido maior interesse como potenciais drogas antiglioma, devido às suas diversas atividades farmacológicas, como inibição do crescimento celular, invasão tumoral, ação anti-inflamatória e promoção da regressão tumoral. A erva *Eleutherine plicata*, conhecida popularmente como Marupazinho, possui ampla utilização na medicina popular devido às suas propriedades farmacológicas, possuindo derivados de quinonas, mais especificamente, naftoquinonas. Estudos anteriores demonstraram que a atividade antiglioma da *Eleutherine plicata* está relacionada a três compostos principais de naftoquinonas – eleutherine, isoeleutherine e eleutherol – contudo, seu mecanismo de ação permanece indefinido. Assim, o objetivo do trabalho é investigar o potencial efeito citotóxico e antiproliferativo da eleuterina em modelo *in vitro* de glioblastoma (linhagem C6). A citotoxicidade *in vitro* foi avaliada pelo ensaio MTT; alterações morfológicas foram avaliadas por microscopia de contraste de fase. Apoptose foi determinada pelo ensaio de anexina V-FITC-iodeto de propídio e os efeitos antiproliferativos foram avaliados pelo ensaio de formação de colônias. A expressão da proteína cinase B (AKT/pAKT) foi determinada por western blot, e o mRNA da transcriptase reversa da telomerase foi medido por reação quantitativa em cadeia da polimerase em tempo real (qRT-PCR). Os resultados obtidos indicaram que a eleuterina, isolada a partir da fração Hexânica, apresentou efeito citotóxico na linhagem C6. Foram observadas alterações estruturais pela captura de imagem, com uma redução expressiva da formação de colônias, indução de apoptose, inibição de pAKT e redução da expressão de telomerase após o tratamento. Dessa forma, nosso estudo mostrou que a molécula eleuterina apresenta atividade citotóxica em glioma de linhagem C6.

Palavras-chave: glioma C6; *Eleutherine plicata*; eleuterina; efeito citotóxico.

ABSTRACT

Glioblastoma multiforme (GBM) is the most prevalent malignant primary tumor of the central nervous system (CNS). GBM cells are characterized by rapid proliferation and aggressive migration. There is growing demand for new therapies to treat this tumor, due to current therapeutic limitations. Quinone derivatives from plants have received increased interest as potential antiglioma drugs due to their diverse pharmacological activities such as inhibition of cell growth, inflammation, tumor invasion and promotion of tumor regression. The herb *Eleutherine plicata*, popularly known as Marupazinho, is widely used in popular medicine due to its pharmacological properties, containing quinone derivatives, more specifically naphthoquinones. Previous studies have demonstrated the antiglioma activity of *Eleutherine plicata*, which is related to three main naphthoquinone compounds – eleutherine, isoeleutherine and eleutherol – but mechanism of action remains unclear. Thus, the objective of this study was to investigate the potential cytotoxic and antiproliferative effect of eleutherin in an *in vitro* model of glioblastoma (C6 lineage). *In vitro* cytotoxicity was assessed by the MTT assay; Morphological changes were assessed by phase contrast microscopy. Apoptosis was determined by the annexin V-FITC-propidium iodide assay, and antiproliferative effects were assessed by the colony formation assay. Protein kinase B (AKT/pAKT) expression was measured by western blot, and telomerase reverse transcriptase mRNA was measured by quantitative real-time polymerase chain reaction (qRT-PCR). The results obtained indicated that eleutherin, isolated from the Hexanic fraction, had a cytotoxic effect on the C6 lineage. Structural changes were observed by image capture, with a significant reduction in colony formation, induction of apoptosis, inhibition of pAKT and reduction in telomerase expression after treatment. Thus, our study showed that the eleutherin molecule has cytotoxic activity in C6 lineage glioma.

Keywords: C6 glioma; *Eleutherine plicata*; eleutherine; cytotoxic effect

SUMÁRIO

1. VISÃO INTEGRADORA DO PROBLEMA	1
2. ARTIGO: (EFEITOS CITOTÓXICOS <i>in vitro</i> E MECANISMOS DE AÇÃO DA ELEUTHERINE ISOLADA DO BULBO DE <i>Eleutherine plicata</i> EM CÉLULAS DE GLIOMA C6 DE RATOS)	3
3. CONCLUSÕES INTEGRADORAS	4
4. REFERÊNCIAS	4

1. VISÃO INTEGRADORA DO PROBLEMA

Glioma é uma doença maligna fatal derivada da linhagem de células gliais. Essas células apresentam diversos perfis, oligodendrocitomas, astrocitomas e glioblastomas (gliomas de grau IV). Embora menos prevalentes que outras neoplasias, 60% são representados por gliomas de alto grau (grau IV), que apresentam padrão agressivo e envolvem migração e infiltram fortemente o parênquima cerebral (SCHWARTZBAUM *et al*, 2006; WEN *et al*, 2008; CAMPOS *et al*, 2016; COLQUHOUN, 2017; RHUN, *et al*, 2019). Apesar das diferentes estratégias de tratamento para o glioma dependerem do tamanho, localização e subtipos distintos do tumor, a terapêutica atual envolve a intervenção cirúrgica, com a radioterapia e a quimioterapia. Em geral, a quimioterapia para o glioma inclui Nimotuzumabe, terapia com anticorpos (temozolomida), entretanto esses pacientes apresentam prognóstico reservado, pela quimioterapia apresentar baixa eficácia, haja vista que o glioblastoma possui diversos mecanismos de escape, envolvendo principalmente stem cells (ALVES *et al*, 2021). Além disso, o glioma rapidamente desenvolve resistência a diversas drogas (COLQUHOUN, 2017). Portanto, existe a necessidade de desenvolvimento de novos agentes antitumorais para tratar este câncer. Desse modo, estão em curso diversos estudos para identificar moléculas mais eficientes e com propriedades biologicamente ativas para inibir a progressão do tumor.

Eleutherine plicata, da família Iridaceae, é popularmente conhecida na região Amazônica como Marupazinho. Ribeiro (2008) identificou a presença de açúcares redutores, fenóis e taninos, esteróides e terpenóides, azulenos, carotenóides e derivados cumarínicos nas folhas de *Eleutherine plicata*, e, nos bulbos, a presença de componentes como: esteroides, triterpenos, azulenos, saponinas, antraquinonas, naftoquinonas, fenóis, taninos, açúcares redutores e derivados cumarínicos (MALHEIROS, 2015), além de antraquinonas do tipo crisofanol e esteroide saponina. Apesar dos numerosos componentes derivados de *Eleutherine plicata*, as atividades biológicas desta planta têm sido relacionadas principalmente à presença de quinonas, mais especificamente, naftoquinonas (MALHEIROS, 2015; BARBOSA, 2012; VALE *et al.*, 2020) sobretudo isoeleuterina e eleuterina. O extrato aquoso (EA) dos bulbos secos desta erva contém eleuterina, a qual é capaz de gerar diversos efeitos biológicos, como estresse oxidativo pela liberação de espécies reativas de oxigênio, anti-inflamatório e apoptose (BORGES, 2012) e propriedades antitumorais em

diferentes linhagens celulares de câncer, como em células de U-251 (glioma humano), MCF-7 (mama), NCI/ADR-RES (ovário que expressa multi-drogas fenótipo de resistência), 786-0 (rim), NCI-H460 (pulmão, não pequenas células), HT-29 (côlon) e K562 (leucemia) (CAMPOS *et al* 2016; GOMES *et al*, 2021). Além disso, sabe-se que eleuterina é um inibidor catalítico reversível da atividade da topoisomerase II humana, que estabiliza o complexo DNA-enzima na presença de ATP (KRISHNAN E BASTOW, 2000). Assim, ao inibir a atividade desta enzima, eleuterina pode causar a quebra transitória da fita dupla do DNA e estar envolvida em processos oxidativos biológicos (ANDOH e ISHIDA, 1998; PEREYRA *et al*, 2019). Alguns estudos sugerem que as naftoquinonas podem exercer suas atividades reguladoras nas células, agindo em diferentes proteínas da família das vias de sinalização, como fosfatidilinositol-3-quinase/AKT e MAPK, que são relevantes em diversos processos fisiopatológicos, principalmente o câncer.

Outras naftoquinonas com potencial antiproliferativo e antitumoral foram identificadas, como isoeleuterina, isoeleuterol, eleuterinona e seus efeitos biológicos são comparados em diversos estudos (MALHEIROS *et al.*, 2015; GALUCIO, 2014; ZAMAN *et al.*, 2014; CAMPOS *et al.*, 2016; CHEN *et al.*, 2018). Segundo Campos *et al* (2016) realizaram testes de citotoxicidade com eleuterina e isoeleuterina, derivados do extrato metanólico, em cepas de glioma (U251) e câncer de mama (MCF-7), nos quais eleuterina teria efeito citotóxico mais potente em comparação a isoeleuterina. Isso pode ser explicado por esses compostos serem isômeros epiméricos e possuírem uma porção 1,4-naftoquinona com apenas uma diferença estrutural, o grupo β -metil metil para eleuterina e o grupo α -metil para isoeleuterina. Os resultados indicam que a melhor atividade da eleuterina está relacionada à quiralidade em seu anel pirano com o grupo β -metil (CAMPOS *et al.*, 2016). Por conta disso, a molécula isolada de eleuterina foi escolhida neste trabalho para avaliar o possível mecanismo de ação da molécula.

O presente estudo teve como objetivo investigar a atividade antitumoral de eleuterina obtida de *Eleutherine plicata* contra as propriedades proliferativas, migratórias e invasivas, apoptose e mecanismo relacionado da linhagem celular de glioma C6 in vitro. Tendo isso em vista, este trabalho foi realizado com o objetivo de identificar uma das possíveis vias envolvidas no efeito antiproliferativo e citotóxico da eleuterina em células de glioblastoma.

2. ARTIGO: (EFEITOS CITOTÓXICOS *in vitro* E MECANISMOS DE AÇÃO DA ELEUTHERINE ISOLADA DO BULBO DE *Eleutherine plicata* EM CÉLULAS DE GLIOMA C6 DE RATO)

Article

In Vitro Cytotoxic Effects and Mechanisms of Action of Eleutherine Isolated from *Eleutherine plicata* Bulb in Rat Glioma C6 Cells

Victoria Mae Tsuruzaki Shinkai ^{1,2}, Izana Marize Oliveira Sampaio ², Eline Gomes dos Santos ², Adan Jesús Galué-Parra ³, Dionisia Pelaes Ferreira ^{4,5}, Drielly Dayanne Monteiro Santos Baliza ⁶, Neidiane Farias Ramos ², Raphael Sanzio Pimenta ⁶, Rommel Mario Rodriguez Burbano ⁷, Chubert Bernardo Castro Sena ³, Barbarella Matos Macchi ^{1,2,8}, Irlon Maciel Ferreira ^{4,5} and Edilene Oliveira Silva ^{3,9} and José Luiz Martins do Nascimento ^{1,2,8,*}

- 1 Programa de Pós-Graduação em Farmacologia e Bioquímica, Instituto de Ciências Biológicas, Universidade Federal do Pará, Belem 66075-110, Brazil
 - 2 Laboratório de Neuroquímica Molecular e Celular, Instituto de Ciências Biológicas, Universidade Federal do Pará, Belem 66075-110, Brazil
 - 3 Laboratório de Biologia Estrutural, Instituto de Ciências Biológicas, Universidade Federal do Pará, Belem 66075-110, Brazil
 - 4 Programa de Pós-Graduação em Ciências Farmacêuticas, Departamento de Ciências Biológicas e da Saúde, Universidade Federal do Amapá, Macapa 68902-280, Brazil
 - 5 Laboratório de Biocatálise e Síntese Orgânica Aplicada, Departamento de Ciências Exatas e Tecnológicas, Universidade Federal do Amapá, Macapa 68902-280, Brazil
 - 6 Programa de Pós-Graduação em Biodiversidade e Biotecnologia da Região Norte, Universidade Federal do Tocantins, Palmas 77001-090, Brazil
 - 7 Laboratório de Citogenética Humana, Instituto de Ciências Biológicas, Universidade Federal do Pará, Belem 66075-110, Brazil
 - 8 Instituto Nacional de Ciência e Tecnologia em Neuroimunomodulação (INCT-NIM), Rio de Janeiro 21040-900, Brazil
 - 9 Instituto Nacional de Ciência e Tecnologia de Biologia Estrutural e Bioimagem (INCT-INBEB), Rio de Janeiro 21941-902, Brazil
- * Correspondence: donascimentojlm@gmail.com or jlmm@ufpa.br; Tel.: +55-91-32017545



Citation: Shinkai, V.M.T.; Sampaio, I.M.O.; dos Santos, E.G.; Galué-Parra, A.J.; Ferreira, D.P.; Baliza, D.D.M.S.; Ramos, N.F.; Pimenta, R.S.; Burbano, R.M.R.; Sena, C.B.C.; et al. In Vitro Cytotoxic Effects and Mechanisms of Action of Eleutherine Isolated from *Eleutherine plicata* Bulb in Rat Glioma C6 Cells. *Molecules* **2022**, *27*, 8850. <https://doi.org/10.3390/molecules27248850>

Academic Editor: Yujun Zhao

Received: 1 November 2022

Accepted: 5 December 2022

Published: 13 December 2022

Publisher's Note: MDPI stays neutral with regard to jurisdictional claims in published maps and institutional affiliations.



Copyright: © 2022 by the authors. Licensee MDPI, Basel, Switzerland. This article is an open access article distributed under the terms and conditions of the Creative Commons

Attribution (CC BY) license (<https://creativecommons.org/licenses/by/4.0/>).

Abstract: Gliomas are the most common primary malignant brain tumors in adults, and have a poor prognosis, despite the different types of treatment available. There is growing demand for new therapies to treat this life-threatening tumor. Quinone derivatives from plants have received increased interest as potential anti-glioma drugs, due to their diverse pharmacologic activities, such as inhibiting cell growth, inflammation, tumor invasion, and promoting tumor regression. Previous studies have demonstrated the anti-glioma activity of *Eleutherine plicata*, which is related to three main naphthoquinone compounds—eleutherine, isoeleutherine, and eleutherol—but their mechanism of action remains elusive. Thus, the aim of this study was to investigate the mechanism of action of eleutherine on rat C6 glioma. In vitro cytotoxicity was evaluated by MTT assay; morphological changes were evaluated by phase-contrast microscopy. Apoptosis was determined by annexin V-FITC-propidium iodide staining, and antiproliferative effects were assessed by wound migration and colony formation assays. Protein kinase B (AKT/pAKT) expression was measured by western blot, and telomerase reverse transcriptase mRNA was measured by quantitative real-time polymerase chain reaction (qRT-PCR). Eleutherine reduced C6 cell proliferation in a dose-dependent manner, suppressed migration and invasion, induced apoptosis, and reduced AKT phosphorylation and telomerase expression. In summary, our results suggest that eleutherine has potential clinical use in treating glioma.

Keywords: glioma C6; rat brain tumor; *Eleutherine plicata*; eleutherine; cytotoxicity

1. Introduction

Glioma is a fatal malignancy derived from the glial cell lineage with a high recurrence rate. Although less prevalent than other neoplasms, 60% are aggressive high-grade gliomas (grade IV), which migrate and strongly infiltrate the brain parenchyma [1–5]. Gliomas, in general, are responsible for approximately 38% of primary brain tumors, and represent more than 70% of all central nervous system (CNS) tumors, the most frequent and malignant being glioblastoma multiforme [6,7]. Glioblastomas have the highest proportion of malignancy and the worst prognosis of CNS tumors. Only 5.5% of patients usually survive for 5 years after diagnosis [8] and have a 1-year survival rate because of the limitations of treatment's approaches [9].

Treatment strategies for glioma differ, depending on tumor size, location, and distinct tumor subtype, and involve a combination of surgery, radiotherapy, and chemotherapy. Typically, glioma chemotherapy includes the antibody nimotuzumab and temozolomide, but their efficacy is low, and these tumors have poor prognosis [10–14]. In addition, gliomas develop resistance to numerous drugs [15–19]. Therefore, there is a real need for new antitumor agents to treat this deadly cancer, and efforts are ongoing to identify more efficient and active molecules to regulate the tumor's progression.

Several plants, such as *Eleutherine plicata*, *Eleutherine americana*, and *Cipura paludosa*, are important sources of chemicals and contain high levels of naphthoquinones, a class of natural products with diverse biological activities. Aqueous extracts of the dried bulbs of these herbs have been described to generate oxidative stress by inducing the deleterious endogenous formation of a bioactive oxygen-derived species that inhibits inflammation, promotes apoptosis, and exhibits important anticancer properties in different cancer cell lines, such as glioma (U-251), breast (MCF-7), ovary (NCI/ADR-RES), kidney (786-0), lung non-small cell (NCI-H460), colon (HT-29), HepG2 cells, and leukemia (K562) [20,21].

These effects are mainly related to the presence of naphthoquinones, more specifically eleutherine, isoeleutherine, and eleutherol (Figure 1) [20,22]. Previous works have demonstrated the antiproliferative effect of eleutherine and isoeleutherine isolated from a methanolic extract of *Cipura paludosa* bulbs in glioma (U251) and breast cancer (MCF-7) lines [20]. The results indicate that eleutherine is more cytotoxic than isoeleutherine. These compounds are epimeric isomers and have a 1,4-naphthoquinone moiety with only one structural difference, the β -methyl group of eleutherine and the α -methyl group of isoeleutherine. Thus, it follows that the higher activity of eleutherine is related to the chirality of its pyran ring with the β -methyl group [20].

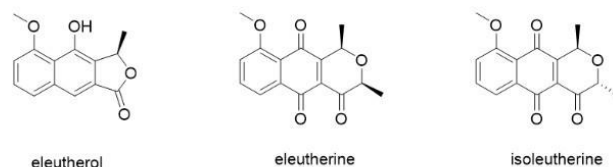


Figure 1. Chemical structures of eleutherol, eleutherine, and isoeleutherine.

Some studies suggest that naphthoquinones may exert their regulatory activities in cancer cells by acting on different signal transduction pathway family proteins, such as phosphatidylinositol-3-kinase/AKT and MAP kinase (MAPK) [23–25]. In addition, it is known that eleutherine reversibly inhibits the catalytic activity of human topoisomerase II by stabilizing the DNA–enzyme complex in the presence of ATP [26]. Thus, by inhibiting the activity of this enzyme, eleutherine can cause transient double-strand breakage in DNA and contribute to biological oxidative processes [27,28].

These activities open new opportunities for pharmacotherapy, especially for cancer [20,29,30]. However, eleutherine's mechanism of action remains elusive. Thus, isolated eleutherine was used in this work to elucidate a possible mechanism of its action on C6 glioma cells.

2. Results

2.1. Characterization of the Compound Isolate

The compound isolated from *Eleutherine plicata* bulbs was obtained as a brownish yellow crystal. Starting from 3 g of the lyophilized ethanolic extract yielded over 49 mg of the pure compound, with 95% relative concentration (Figure 2, see Supplementary Figures S1 and S2), with MS (70 eV, EI) 272 (42), 257 (100), 243 (52), 214 (32), 157 (10), and 121 (25), and the probable molecular formula was deduced as $C_{14}H_{12}O_4$. The melting point was of 144–146 °C. The IR spectrum showed the presence of characteristic peaks, such as $-C-H_{sp^2}$ (2974 cm^{-1}), $-C-H_{sp^3}$ (2913), $-C=O$ (1777 cm^{-1}), of benzene ring (1582 cm^{-1}) absorptions. The molecular characterization data were compared with those in the literature [31].

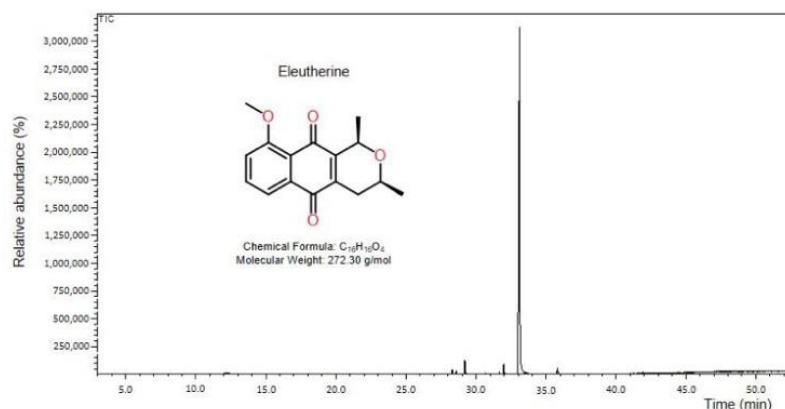


Figure 2. Chromatogram of eleutherine isolated from the bulbs of *Eleutherine plicata*. Peak area (95.03%) and retention time at 33.10 min.

2.2. Cytotoxic Effect of Eleutherine Treatment on C6 Cells

Eleutherine presented a cytotoxic effect on C6 cells. After 6 and 12 h of treatment, cell death was observed at $1\ \mu\text{M}$ with IC_{50} of $32.33\ \mu\text{M}$ (± 1.25) and $28.46\ \mu\text{M}$ (± 1.85), respectively (Figure 3A,B). During 24 h of treatment, a cytotoxic effect was observed at a concentration range of 0.05 – $100\ \mu\text{M}$, with an IC_{50} of $4.98\ \mu\text{M}$ (± 0.22) (Figure 3C). Thus, eleutherine reduced cell viability in a concentration- and time-dependent manner (Figure 3D).

2.3. Morphological Changes in C6 Cells after Eleutherine Treatment

No structural changes were observed in the control, which was characterized by the presence of fusiform cells and monolayer cells. Cells treated with eleutherine at $1\ \mu\text{M}$ presented small morphological changes. However, cells treated at 20 and $40\ \mu\text{M}$ showed structural changes characteristic of apoptosis, such as large and round cells and irregularly shaped cells with cytoplasmic shrinkage (white arrow). Treatment with eleutherine at $100\ \mu\text{M}$ resulted in cell death (black arrow) (Figure 4).

2.4. Eleutherine Reduces Colony Formation by C6 Cells

Treatment with eleutherine at 20 , 40 , and $100\ \mu\text{M}$ for 12 h resulted in decreases in colony formation (52.44%, 94.52%, and 99.18%, respectively) compared with that observed in the untreated group. No reduction in colony formation was observed at $1\ \mu\text{M}$ eleutherine (Figure 5).

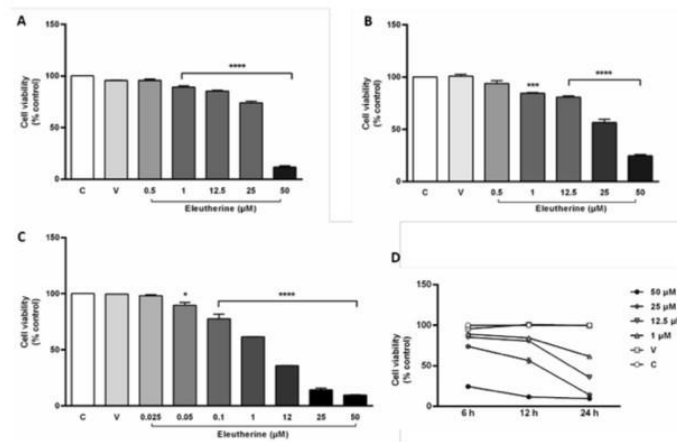


Figure 3. Eleutherine reduced the viability of glioblastoma cells as measured by the MTT assay. Cells were treated with different concentrations of eleutherine for 6 h (A), 12 h (B), and 24 h (C). (D) Cell viability curve showing the concentration and time-dependence of eleutherine's effect. Data are presented as the mean \pm SEM of three independent trials. Here, * $p < 0.05$, *** $p < 0.001$, and **** $p < 0.0001$ vs. untreated control (ANOVA, Tukey's post hoc test); C, control; V, vehicle.

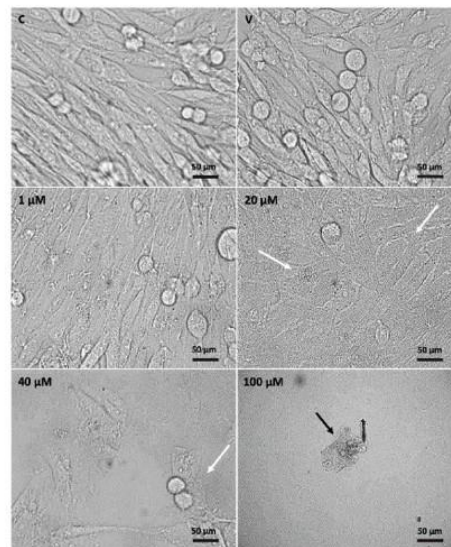


Figure 4. Morphological alterations in untreated C6 cells and after treatment with eleutherine at different concentrations (1, 20, 40, and 100 µM) for 12 h. Cells were examined using a phase-contrast microscope (Leica DMI6000B). White arrow indicates irregularly shaped cells with cytoplasmic shrinkage and black arrow indicates cell death. Images were taken using a 63 \times objective; C, control; V, vehicle.

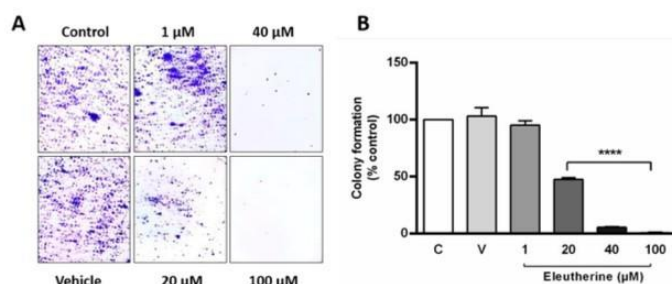


Figure 5. Eleutherine reduces colony formation in C6 cells. (A) C6 cells stained with crystal violet after eleutherine treatment for 12 h. (B) Graphic quantification of the colony numbers. Data are presented as the mean \pm SEM of three independent trials. Here, **** $p < 0.0001$ vs. untreated control (ANOVA, Tukey's post hoc test).

2.5. Eleutherine Induces C6 Cell Apoptosis

The annexin V-PI assay was used to confirm apoptotic cell death caused by eleutherine. The C6 cells were treated with different concentrations of eleutherine (1 μ M, 20 μ M, and 40 μ M) and displayed increased numbers of apoptotic cells, mainly in the late stages of apoptosis, as follows: at 1 μ M, 57%; at 20 μ M, 44.4%; and, at 40 μ M, 77%, compared with the control and positive control (camptothecin), as shown in Figure 6. Our results demonstrate that eleutherine induces apoptosis in a dose-dependent manner to a level higher than that observed in the positive control.

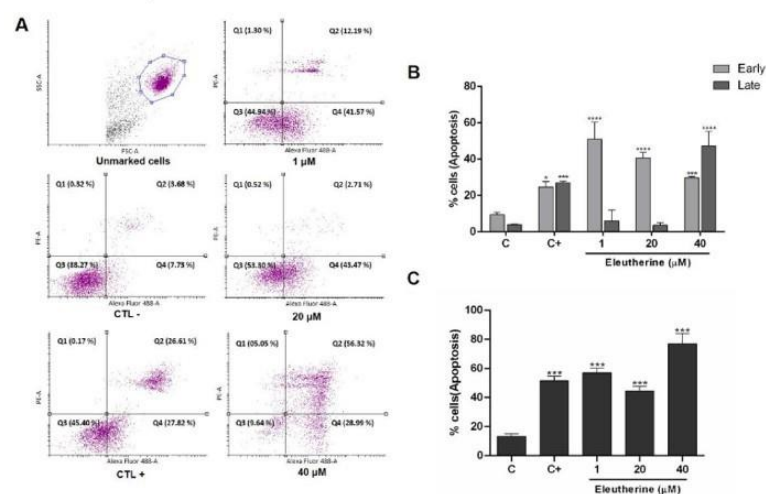


Figure 6. Eleutherine induces apoptosis in C6 cells. The cells were treated with eleutherine (1, 20, and 40 μ M) for 24 h. (A) Cells were stained with annexin V-FITC and propidium iodide (PI) and subjected to flow cytometry analyses. Early apoptotic cells were in the Q4 quadrant and late apoptotic cells were in the Q2 quadrant. (B) Quantification of the percentage of early and late apoptotic C6 cells. (C) Quantification of the percentage of total apoptotic C6 cells. Here, * $p < 0.05$, *** $p < 0.01$, **** $p < 0.0001$ compared with untreated control (ANOVA, Tukey's post hoc test); C, control; C+, positive control (camptothecin at 5 μ M).

2.6. Eleutherine Reduces the Expression of pAKT in C6 Cells

The expression of phosphorylated AKT was reduced after treatment with eleutherine by 48.84% at 20 μM and by 39.27% at 40 μM (Figure 7). Thus, the PI3K/AKT pathway in the glioma cells must be inhibited by the action of eleutherine.

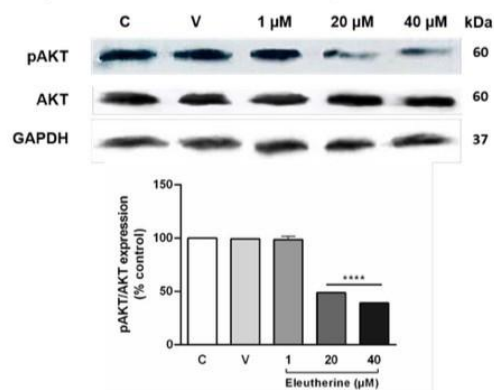


Figure 7. Eleutherine treatment reduced AKT phosphorylation in C6 cells. The expression of pAKT and AKT, and of GAPDH as the control protein, was detected by western blotting. The pAKT:AKT ratio is expressed as a percentage. The eleutherine treatment groups (20 and 40 μM) showed a greater reduction in AKT phosphorylation than was observed in the untreated group. Data are presented as the mean \pm SEM of three independent trials. Here, **** $p < 0.0001$ vs. untreated control (ANOVA, Tukey's post hoc test); C, control; V, vehicle.

2.7. Eleutherine Reduces Telomerase (TERT) mRNA Expression

Eleutherine treatment reduced TERT expression in a dose-dependent manner at 1 μM (17.1%), 20 μM (37.3%), and 40 μM (45.8%). The results suggest that after treatment of glioma cells with eleutherine there was a loss of telomerase activity that may have induced cell death (Figure 8).

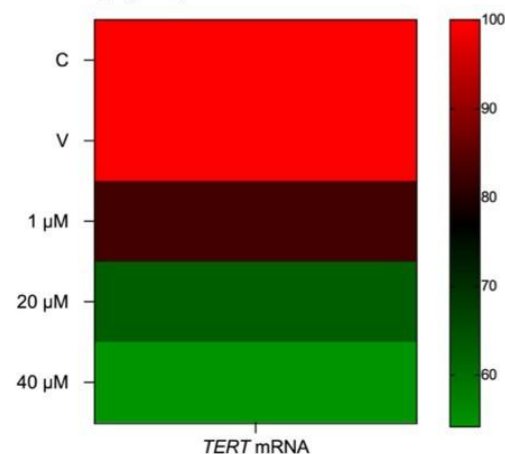


Figure 8. Heat map correlating eleutherine treatment with TERT mRNA expression in glioma cells. The color of each rectangle indicates the value of the Pearson correlation coefficient (ρ) between the eleutherine-treated groups and TERT mRNA expression.

3. Discussion

Naphthoquinones are significantly cytotoxic to different types of tumor cell lines. Recent evidence indicates that the antiproliferative activity of *Eleutherine plicata* is due to the presence of the three main naphthoquinones, namely eleutherine, isoeleutherine, and eleutherol [21]. Treatment of C6 cells with eleutherine resulted in a dose- and time-dependent change in cell viability. As expected, the IC_{50} decreased with the treatment time, reaching 4.98 μ M in cells exposed up to 24 h, demonstrating the effectiveness and potency of eleutherine. These findings are similar to those obtained with other naphthoquinone derivatives in primary cultures of cancer cells [30]. Eleutherine and isoeleutherine isolated from the bulbs of *C. paludosa* exhibited promising cytotoxicity against glioma (U-251), with IC_{50} values between 2.6 and 13.8 mg/mL [20].

The IC_{50} value obtained in our experiment is comparable to those reported in the literature. In addition, it was possible to verify that eleutherine does not have cytotoxic effects on normal glial cells (see Supplementary Figure S3), thus, proving its therapeutic potential and its safety in regard to healthy cells. From these results, we highlight the significant cytotoxic effect of eleutherine on C6 cells reported here.

Cancer cells, such as glioma cells, cause the failure of efficient cellular response and disable the inhibition of apoptosis. Our data indicate that eleutherine was able to induce apoptosis in C6 cells. Treatment resulted in increases in the apoptosis rates when analyzed by FITC-Annexin V/PI staining. The C6 cells treated with 40 μ M eleutherine showed an increased rate of apoptosis, similar to a previous study with another naphthoquinone [32,33]. These data support the hypothesis that there is a correspondence between the IC_{50} and the inhibition of proliferation and a high apoptosis rate.

Phase-contrast microscopy revealed structural changes produced by eleutherine. Cells treated with 20 μ M, 40 μ M, and 100 μ M eleutherine retracted, decreased in size, and underwent significant cytoplasmic shrinkage, similar to cells undergoing apoptosis. These results clearly indicate that decreased cell size and cytoplasmic shrinkage may be related to cell death [34].

Moreover, through the colony formation assay, it was possible to observe the antiproliferative effect of eleutherine on cultured cells. The cells treated with 20 μ M eleutherine formed significantly fewer colonies, and treatment with 40 μ M and 100 μ M eleutherine almost completely inhibited the formation of colonies. Interestingly, the ability to form colonies is a sensitive indicator of undifferentiated cancer stem cells [35,36]. These results indicate that eleutherine can act on stem cells, a therapeutic strategy which prevents cancer from relapsing.

Treatment with eleutherine inhibited the migration of glioblastoma cells in comparison with the untreated control group and the vehicle group. With 1 μ M eleutherine, it was possible to observe a reduction in the proliferation of cells and, at 20 μ M, the cells showed changes in morphology, suggesting apoptosis. The morphology was totally altered in a dose-dependent way at 12, 24, and 48 h. These findings corroborate the results of the cell viability assay, highlighting the considerable antitumor potential of eleutherine, similar to other naphthoquinones, in an in vitro model of glioblastoma [23–25,32,33,37,38].

The AKT pathway is important in the genesis of several types of cancer, being overexpressed and playing critical roles in the survival, proliferation, invasion, and migration of cancer cells. This pathway is vital in the development of glioma cells and related to metabolism, epithelial–mesenchymal transition, and angiogenesis, allowing the glioma to acquire a high degree of invasiveness and malignancy by bypassing the mechanisms of apoptosis [37,39–41]. In our study, we found that eleutherine decreased the expression of p-Akt and inhibited the PI3K/AKT pathway, resulting in glioblastoma cell death.

It is known that *TERT* is a component of telomerase, a reverse transcriptase ribonucleoprotein complex that maintains telomere length in cells with high proliferative ability, and that it plays a key role in cancer formation. Telomere maintenance is affected by *TERT* gene amplification and epigenetic changes, such as DNA methylation, *TERT* promoter germ line and somatic mutations, and *TERT* structural variants [42,43]. Catalytic inhibitors of

topoisomerases act either by inhibiting the binding of the enzyme to DNA or by preventing it from cleaving the DNA, compromising its cellular repair capacity [44,45]. Our results suggest that eleutherine, as with other naphthoquinones, reduces the telomerase activity that is critical to glioma cells growth [38].

More recent studies confirm the interaction of the telomerase with various intracellular signaling pathways including the PI3K/AKT/mTOR pathway, which mainly participates in inflammation, the epithelial-to-mesenchymal transition, and tumor cell invasion and metastasis [46,47]. Thus, a decrease in phosphorylated AKT expression inhibits hTERT expression, thereby reducing proliferative capacity, altering the cell cycle, and promoting apoptosis in glioma cells.

The results indicate that eleutherine treatment reduced the expression of phosphorylated AKT and *TERT* in a dose-dependent manner. These mechanisms directly influence the cell cycle and cells' ability to undergo apoptosis, which are of great interest in research on new antineoplastic therapies.

4. Materials and Methods

4.1. Plant Material

The specimens of *Eleutherine plicata* used in this study were obtained from a private medicinal plant plot in the city of Palmas, Tocantins, Brazil. The exicata is deposited in the Herbarium of the Federal University of Tocantins under the code number 8214.

4.2. Production of Raw Extract

For the preparation of extracts, *Eleutherine plicata* of an average size of 5 cm were ground in a blender with 2 mL of distilled water and subjected to decoction for 2 min, under agitation, according to Baliza et al. (2022) [48]. The mixture was distributed in extraction funnels, and hexane was added to the desired final volume. The funnel mixture was homogenized and allowed to sit until phase separation occurred. The hexane fraction was subjected to rotary evaporation to concentrate the extract in the flask. The flask was washed with hexane to loosen the evaporate that had stuck to the flask wall, and the concentrated extract was distributed among smaller flasks, which were left open in an exhaust hood for final evaporation and further concentration of the extract. After cooling, the material was filtered through No. 4 Whatman filter paper.

4.3. Extraction and Isolation

Initially, the ethanol extract was fractionated according to Tewierik et al. (2006) [30]. It was resuspended in 50 mL of a methanol/water solution (1:1) for 24 h, and was then subjected to a liquid/liquid partition, using solvents of increasing polarities in the order hexane, chloroform, and ethyl acetate. Sequentially, the fractions were analyzed by gas chromatography coupled to a mass spectrometer (GC-MS). Considering the results of this analysis, the isolation of the main compounds was carried out through separation by column chromatography, using silica gel as a stationary phase and hexane/ethyl acetate (90:10, 90:20, 85:15, and 80:20) as the mobile phase.

Next, the isolated compounds were characterized by gas chromatography coupled to a mass spectrometer (GC-MS), in a Shimadzu/GC 2010 device with a Shimadzu/AOC-500 auto-injector and a MS2010 plus mass detector with electronic impact ionization (IE, 70 and V), equipped with a DB-5MS fused silica column (Agilent J&W Advances 30 m × 0.25 mm × 0.25 µm), with helium at 65 kPa as the carrier gas. The conditions were as follows: oven temperature started at 100 °C for 2 min, increased to 290 °C at 4 °C min⁻¹ and held for 6 min; injector and interface temperature was maintained at 250 °C; splitless 1 µL injection; helium was used as the carrier gas at a constant flow 0.75 mL min⁻¹, and the run time was 30 min. The scan range was *m/z* 80–400. Retention times was 33 min. The final characterization was performed by infrared spectroscopy, using a Shimadzu IRAffinity-1 spectrometer operating with Fourier transform.

4.4. Cell Culture

Rat C6 glioblastoma cells (CCL-107TM, ATCC) were cultured in DMEM supplemented with 10% fetal bovine serum and maintained in an incubator at 37 °C with 5% CO₂, with the medium changed every 2 days. To perform the experiments, cells were washed with PBS and dissociated with 0.05% trypsin-EDTA, followed by centrifugation (1500 rpm for 3 min). After counting, cells were resuspended in culture medium and used to carry out the proposed assays.

Primary cultures of Müller cells were obtained from 9-day-old embryos. Retinal tissue was collected, and cells were distributed in 24-well plates (1 × 10⁶ cells/well). Cultures were grown for 10 days in DMEM supplemented with 10% fetal bovine serum and kept in an incubator at 37 °C with 5% CO₂.

4.5. Cell Cytotoxicity Assay

Cells were plated (2 × 10⁴ cells/well) in 96-well plates and treated with eleutherine at different times and concentrations (0.5–50 µM for 6 h and 12 h, and 0.025–50 µM for 24 h). After the treatment period, the cells were incubated for 2 h with 0.5 mg/mL MTT solution (thiazolyl blue tetrazolium bromide—M2128, Sigma-Aldrich, St. Louis, MO, USA) in serum-free DMEM. Absorbance was measured with a microplate reader (BioRad, Hercules, CA, USA) at 570 nm. The results obtained were plotted with the mean and standard deviation of samples expressed as a percentage of the control value. We used GraphPad Prism 9 software to calculate the IC₅₀.

4.6. Morphological Analysis of Eleutherine-Treated C6 Glioma Cells

Morphological alterations of C6 glioma cells were examined with a phase-contrast microscope (Leica DMI6000B). Cells were seeded in 12-well plate and incubated for 12 h with eleutherine at different concentrations (1 µM, 20 µM, 40 µM, 100 µM). Images were taken using a 63× objective.

4.7. Wound Healing/Scratch Migration Assay

A 12-well plate cell migration assay was performed to estimate the effect of eleutherine on C6 migration capacity. After 12 h of cell culture, a transverse lesion was made in the central surface of each well. Cells were treated with eleutherine at different concentrations (1 µM, 20 µM, 40 µM, and 100 µM). Cell migration to the injured area was followed by image capture using a digital camera coupled to an inverted microscope (Leica DMI6000B), using a 10× objective, at 0, 12, 24, and 48 h of treatment.

4.8. Colony Formation Assay

A colony formation assay was performed to evaluate the effect of eleutherine on cell proliferation. The C6 cells were used to seed a 12-well plate. After 24 h of culture, they were treated with eleutherine (1, 20, 40, and 100 µM) for 12 h. Cells were washed with PBS and dissociated with trypsin-EDTA (700 µL, 5 min). Quantification was made in a Neubauer chamber (1:1) in a 0.4% trypan blue solution. An aliquot of 1000 viable cells from each group was used to seed a 6-well plate and cultured for 7 days, with the medium changed every 2 days. Cultures were then washed with PBS and stained with 0.25% crystal violet/50% ethanol for 30 min.

4.9. Annexin V-FITC-Propidium Iodide (PI) Assay

Apoptosis/necrosis analysis was performed with the annexin V-FITC kit (Invitrogen). Cells were cultivated in a 12-well plate and treated with eleutherine (1, 20, and 40 µM) for 12 h. After that, cells were treated according to the manufacturer's protocol. In each sample, 1 µL of annexin V-FITC and 2.5 µL of PI (250 µg/mL) were added and incubated for 10 min in an ice bath protected from light. The volume was made up to 250 µL with binding buffer and analyzed using a flow cytometer (BD FACSCanto II). Camptothecin (Sigma-Aldrich) was used as positive control (5 µM). The samples were analyzed using the

flow cytometer with BD FACSDiva software, and a total of 10,000 events were collected for each sample and analyzed using the Flowing Software 2.5.1 (Turku, Finland). The final results were analyzed by cell percentage in each quadrant.

4.10. Western Blotting

The C6 cells were treated with eleutherine (1, 20, and 40 μM) for 12 h, after which cell lysates were prepared. Each lysate (60 μg of protein) was submitted to 10% SDS-PAGE gel electrophoresis. Gels were electrotransferred to nitrocellulose membranes (Hybond ECL, GE Healthcare, Uppsala, Sweden) by use of a membrane transfer system (Bio-Rad). Membranes were blocked with 5% skim milk at room temperature for 1 h, followed by overnight incubation with primary antibodies anti-AKT (cat.no.9272, Cell Signaling Technology) and anti-phospho-AKT (Ser473) (cat.no.9271, Cell Signaling Technology, Danvers, MA, USA) in 1:1000 dilution, and anti-GAPDH (C terminus) (SAB2500450, Sigma-Aldrich), dilution 1:500. After washing, the membranes were incubated with the secondary antibodies goat anti-mouse IgG, peroxidase conjugated in 1:2500 dilution, and horseradish peroxidase (HRP)-conjugated goat anti-rabbit IgG antibody used at 1:2500 (NIF824, GE Healthcare) for 1 h. Protein expression was detected using a chemiluminescent substrate kit (Merck Millipore, Burlington, MA, USA), and the images were captured by a ChemiDoc system (Bio-Rad, Hercules, CA, USA).

4.11. Real-Time Quantitative PCR Assay

Total RNA was extracted with TRI reagent (Applied Biosystems, Waltham, MA, USA), following the manufacturer's instructions. The RNA concentration and quality were determined using a NanoDrop spectrophotometer (Kisker Biotech, Steinfurt, Germany) and 1% agarose gels. Complementary DNA was synthesized using high-capacity cDNA archive (Applied Biosystems, Waltham, MA, USA). The TERT mRNA expression (Rn01409457_m1) was evaluated by quantitative reverse transcription PCR (qRT-PCR) with primers and TaqMan probes purchased as Assays-on-Demand Products for Gene Expression (Applied Biosystems, Waltham, MA, USA). The GAPDH gene (Rn01462662_g1) was selected as an internal control for RNA input and reverse transcription efficiency. All real-time qRT-PCR reactions were performed in triplicate for the hTERT and GAPDH genes. Data were previously analyzed with the $2^{-\Delta\text{Ct}}$ method and subsequently by relative quantification of the genes' expression, which was calculated according to Livak and Schmittgen (2001) and Arocho et al. (2006) [49,50].

4.12. Ethics Statement

This study was approved by the Committee of Ethics of Animal Experiments of the Federal University of Pará (CEUA/UFPA 9381260919). We followed the guidelines found in the NIH Guide for the Care and Use of Laboratory Animals, and the experiments were carried out in compliance with the National Council for the Control of Animal Experimentation (CONCEA, Brazil).

4.13. Statistical Analysis

The data are expressed as the means \pm SEM. The ANOVA followed by Tukey's post hoc method using the statistical program GraphPad Prism 9. The significance levels are indicated as * $p < 0.05$, *** $p < 0.01$, and **** $p < 0.0001$.

5. Conclusions

In conclusion, our results suggest that eleutherine has cytotoxic and antiproliferative activity in glioma cells and induces their death by inhibiting the PI3K/AKT/telomerase pathway. This opens the important possibility that eleutherine is a viable cancer treatment, which should be further tested and studied in an in vivo model.

Supplementary Materials: The following supporting information can be downloaded at: <https://www.mdpi.com/article/10.3390/molecules27248850/s1>, Figure S1: Spectrum of mass (70 eV) of eleutherine isolated from the bulbs of *Eleutherine plicata*; Figure S2: Spectrum of FT-IR (KBr) of eleutherine isolated from the bulbs of *Eleutherine plicata*; Figure S3: Eleutherine is nontoxic to nonneoplastic (glial) cells as analyzed by MTT assay.

Author Contributions: Conceptualization, J.L.M.d.N.; resources V.M.T.S., I.M.O.S., E.G.d.S., A.J.G.-P., D.P.F., D.D.M.S.B. and N.F.R.; writing—original draft preparation, V.M.T.S., I.M.O.S., I.M.F., R.S.P., R.M.R.B., B.M.M., E.O.S. and J.L.M.d.N.; writing—review and editing, C.B.C.S., E.O.S., B.M.M. and J.L.M.d.N.; visualization, E.O.S. and B.M.M.; supervision, B.M.M. and J.L.M.d.N.; project administration, J.L.M.d.N.; funding acquisition, J.L.M.d.N. All authors have read and agreed to the published version of the manuscript.

Funding: This research was funded by Conselho Nacional de Desenvolvimento Científico e Tecnológico (CNPq, grant number 434501/2018-2), Fundação de Amparo à Pesquisa do Estado do Pará (FAPESPA, grant number 063/2020), Coordenação de Aperfeiçoamento de Pessoal de Nível Superior (CAPES), and Pró-Reitoria de Pesquisa e Pós-graduação (PROPEP-UFPA).

Institutional Review Board Statement: Not applicable.

Informed Consent Statement: Not applicable.

Data Availability Statement: Not applicable.

Acknowledgments: We thank Avicola S/G LTDA (Santa Isabel do Pará, Brazil) for kindly providing fertilized White Leghorn eggs (*Gallus gallus*) for our experiments.

Conflicts of Interest: The authors declare no conflict of interest.

References

1. Schwartzbaum, J.; Fisher, J.L.; Aldape, K.D.; Wrensch, M. Epidemiology and molecular pathology of glioma. *Nat. Clin. Pract. Neurol.* **2006**, *2*, 494–503. [\[CrossRef\]](#) [\[PubMed\]](#)
2. Wen, P.Y.; Kesari, S. Malignant gliomas in adults. *N. Engl. J. Med.* **2008**, *359*, 492–507. [\[CrossRef\]](#) [\[PubMed\]](#)
3. Cloughesy, T.F.; Cavenee, W.K.; Mischel, P.S. Glioblastoma: From Molecular Pathology to Targeted Treatment. *Annu. Rev. Pathol.* **2014**, *9*, 1–25. [\[CrossRef\]](#) [\[PubMed\]](#)
4. Chen, D.L.; Hu, M.G.; Liu, Y.Y.; Li, R.T.; Yu, M.; Xu, X.D.; Ma, G.X. New Naphthalene Derivatives from the Bulbs of *Eleutherine americana* with Their Protective Effect on the Injury of HUVECs. *Molecules* **2018**, *23*, 2111. [\[CrossRef\]](#) [\[PubMed\]](#)
5. Chokshi, C.R.; Brakel, B.A.; Tatari, N.; Savage, N.; Salim, S.K.; Venugopal, C.; Singh, S.K. Advances in Immunotherapy for Adult Glioblastoma. *Cancers* **2021**, *13*, 3400. [\[CrossRef\]](#)
6. Behin, A.; Xuan-Hoang, K.; Carpentier, A.F.; Delattre, J.Y. Primary brain tumors in adults. *Lancet* **2003**, *361*, 323–331. [\[CrossRef\]](#)
7. Lapointe, S.; Perry, A.; Butowski, N.A. Primary brain tumors in adults. *Lancet* **2018**, *392*, 432–446. [\[CrossRef\]](#) [\[PubMed\]](#)
8. Ostrom, Q.T.; Patil, N.; Cioffi, G.; Waite, K.; Kruchko, C.; Barnholtz-Sloan, J.S. CBTRUS statistical report: Primary brain and other central nervous system tumors diagnosed in the United States in 2013–2017. *Neuro Oncol.* **2020**, *22*, 1–96. [\[CrossRef\]](#)
9. Fernandes, C.; Costa, A.; Osório, L.; Lago, R.C.; Linhares, P.; Carvalho, B.; Caeiro, C. Current Standards of Care in Glioblastoma Therapy. *Codon Publ.* **2017**, *11*, 197–241.
10. Stupp, R.; Hegi, M.E.; Mason, W.P.; van den Bent, M.J.; Taphoorn, M.J.B.; Janzer, R.C.; Ludwin, S.K.; Allgeier, A.; Fisher, B.; Belanger, K.; et al. Effects of radiotherapy with concomitant and adjuvant temozolomide versus radiotherapy alone on survival in glioblastoma in a randomised phase III study: 5-year analysis of the EORTC-NCIC trial. *Lancet Oncol.* **2009**, *10*, 459–466. [\[CrossRef\]](#)
11. Oh, J.; Sahgal, A.; Sanghera, P.; Tsao, M.N.; Davey, P.; Lam, K.; Symons, S.; Aviv, R.; Perry, J.R. Glioblastoma: Patterns of Recurrence and Efficacy of Salvage Treatments. *Can. J. Neurol. Sci.* **2011**, *38*, 621–625. [\[CrossRef\]](#) [\[PubMed\]](#)
12. Jackson, C.; Choi, J.; Khalafallah, A.M.; Price, C.; Bettegowda, C.; Lim, M.; Gallia, G.; Weingart, J.; Brem, H.; Mukherjee, D. A systematic review and meta-analysis of supratotal versus gross total resection for glioblastoma. *J. Neurooncol.* **2020**, *148*, 419–431. [\[CrossRef\]](#) [\[PubMed\]](#)
13. Harmouch, E.; Seiflinger, J.; Chaddad, H.; Ubeaud-Sequier, G.; Barths, J.; Saidu, S.; Désaubry, L.; Grandemange, L.; Massfelder, T.; Fuhrmann, G.; et al. Flavagline synthetic derivative induces senescence in glioblastoma cancer cells without being toxic to healthy astrocytes. *Sci. Rep.* **2020**, *10*, 13750. [\[CrossRef\]](#) [\[PubMed\]](#)
14. Nair, M.; Bolyard, C.; Lee, T.J.; Kaur, B.; Yoo, J.Y. Therapeutic Application of Brain-Specific Angiogenesis Inhibitor 1 for Cancer Therapy. *Cancers* **2021**, *13*, 3562. [\[CrossRef\]](#) [\[PubMed\]](#)
15. Colquhoun, A. Cell biology-metabolic crosstalk in glioma. *Int. J. Biochem. Cell Biol.* **2017**, *89*, 171–181. [\[CrossRef\]](#) [\[PubMed\]](#)
16. Nguyen, H.S.; Shabani, S.; Awad, A.J.; Kaushal, M.; Doan, N. Molecular Markers of Therapy-Resistant Glioblastoma and Potential Strategy to Combat Resistance. *Int. J. Mol. Sci.* **2018**, *19*, 1765. [\[CrossRef\]](#)

17. Barros, M.B.L.; Pinheiro, D.R.; Borges, B.N. Mitochondrial DNA Alterations in Glioblastoma (GBM). *Int. J. Mol. Sci.* **2021**, *22*, 5855. [[CrossRef](#)]
18. Ferreira, W.A.S.; Amorim, C.K.N.; Burbano, R.R.; Villacis, R.A.R.; Marchi, F.A.; Medina, T.S.; de Lima, M.M.C.; de Oliveira, E.H.C. Genomic and transcriptomic characterization of the human glioblastoma cell line AHOL₁. *Braz. J. Med. Biol. Res.* **2021**, *54*, 9571. [[CrossRef](#)]
19. Mckinnon, C.; Nandhabalan, M.; Murray, S.A.; Plaha, P. Glioblastoma: Clinical presentation, diagnosis, and management. *BMJ* **2021**, *374*, 1560. [[CrossRef](#)]
20. Campos, A.; Vendramini-Costa, D.B.; Fiorito, G.F.; Ruiz, A.L.T.G.; Carvalho, J.E.; Souza, G.M.R.; Delle-Monache, F.; Cechinel-Filho, V. Antiproliferative effect of extracts and pyranonaphthoquinones obtained from *Cipura paludosa* bulbs. *Pharm. Biol.* **2016**, *54*, 1022–1026. [[CrossRef](#)]
21. Gomes, A.R.Q.; Galucio, N.C.R.; Albuquerque, K.C.O.; Brígido, H.P.C.; Varella, E.L.P.; Castro, A.L.G.; Vale, V.V.; Bahia, M.O.; Burbano, R.M.R.; Molfeta, F.A.; et al. Toxicity evaluation of *Eleutherine plicata* Herb. extracts and possible cell death mechanism. *Toxicol. Rep.* **2021**, *8*, 1480–1487. [[CrossRef](#)] [[PubMed](#)]
22. Mahabusarakam, W.; Hemtasin, C.; Chakthong, S.; Voravuthikunchai, S.P.; Olawumi, I.B. Naphthoquinones, Anthraquinones and Naphthalene Derivatives from the Bulbs of *Eleutherine americana*. *Planta Med.* **2010**, *76*, 345–349. [[CrossRef](#)] [[PubMed](#)]
23. Chen, G.; Yue, Y.; Qin, J.; Xiao, X.; Ren, Q.; Xiao, B. Plumbagin suppresses the migration and invasion of glioma cells via downregulation of MMP-2/9 expression and inactivation of PI3K/Akt signaling pathway in vitro. *J. Pharmacol. Sci.* **2017**, *134*, 59–67. [[CrossRef](#)] [[PubMed](#)]
24. Matias, D.; Balça-Silva, J.; Dubois, L.G.; Pontes, B.; Ferrer, V.P.; Rosário, L.; Anália, C.; Echevarria, J.L.; Ribeiro, A.B.S.; Lopes, M.C.; et al. Dual treatment with shikonin and temozolomide reduces glioblastoma tumor growth, migration and glial-to-mesenchymal transition. *Cell Oncol. (Dordr.)* **2017**, *40*, 247–261. [[CrossRef](#)] [[PubMed](#)]
25. Bernardo, P.S.; Guimarães, G.H.C.; De Faria, F.C.C.; Longo, G.M.C.; Lopes, G.P.F.; Netto, C.D.; Costa, P.R.R.; Maia, R.C. LQB-118 compound inhibits migration and induces cell death in glioblastoma cells. *Oncol. Rep.* **2020**, *43*, 346–357. [[CrossRef](#)] [[PubMed](#)]
26. Krishnan, P.; Bastow, K.F. Novel Mechanisms of DNA Topoisomerase I—Inhibition by Pyranonaphthoquinone Derivatives *Eleutherin*, a *Lapachone*, and *B Lapachone*. *Biochem. Pharmacol.* **2000**, *60*, 1367–1379. [[CrossRef](#)]
27. Andoh, T.; Ishida, R. Catalytic inhibitors of DNA topoisomerase II. *Biochim. Biophys. Acta* **1998**, *1400*, 155–171. [[CrossRef](#)]
28. Pereyra, C.E.; Dantas, R.F.; Ferreira, S.B.; Gomes, L.P.; Silva-Jr, F.P. The diverse mechanisms and anticancer potential of naphthoquinones. *Cancer Cell Int.* **2019**, *19*, 207. [[CrossRef](#)]
29. Aminin, D.; Polonik, S. 1,4-Naphthoquinones: Some Biological Properties and Application. *J. Pharm. Soc. Jpn.* **2020**, *68*, 46–57. [[CrossRef](#)]
30. Kumar, P.; Mallya, P.; Jain, V. Naphthoquinones in the Treatment of Cancer. *J. Pharm. Sci. Res.* **2020**, *12*, 587–590.
31. Tewierik, L.M.; Dimitriadis, C.; Donner, C.D.; Gill, M.; Willems, B. Total synthesis of enantiopure 1,3-dimethylpyranonaphthoquinones including ventiloquinones E, G, L and eleutherin. *Org. Biomol. Chem.* **2006**, *4*, 3311–3318. [[CrossRef](#)] [[PubMed](#)]
32. Guo, N.; Miao, R.; Gao, X.; Huang, D.; Hu, Z.; Ji, N.; Nan, Y.; Jiang, F.; Gou, X. Shikonin inhibits proliferation and induces apoptosis in glioma cells via downregulation of CD147. *Mol. Med. Rep.* **2019**, *19*, 4335–4343. [[CrossRef](#)] [[PubMed](#)]
33. Ma, X.; Yu, M.; Hao, C.; Yang, W. Shikonin induces tumor apoptosis in glioma cells via endoplasmic reticulum stress, and Bax/Bak mediated mitochondrial outer membrane permeability. *J. Ethnopharmacol.* **2020**, *263*, 113059. [[CrossRef](#)] [[PubMed](#)]
34. Shi, M.; Cai, Q.; Yao, L.; Mao, Y.; Ming, Y.; Ouyang, G. Antiproliferation and apoptosis induced by curcumin in human ovarian cancer cells. *Cell Biol. Int.* **2006**, *30*, 221–226. [[CrossRef](#)]
35. Deleyrolle, L.P.; Reynolds, B.A. Identifying and enumerating neural stem cells: Application to aging and cancer. *Prog. Brain Res.* **2009**, *175*, 43–51.
36. Rajendran, V.; Jain, M.V. In Vitro Tumorigenic Assay: Colony Forming Assay for Cancer Stem Cells. *Methods Mol. Biol.* **2018**, *1692*, 89–95.
37. Zhang, F.Y.; Hu, Y.; Que, Z.Y.; Wang, P.; Liu, Y.H.; Wang, Z.H.; Xue, Y.X. Shikonin Inhibits the Migration and Invasion of Human Glioblastoma Cells by Targeting Phosphorylated β -Catenin and Phosphorylated PI3K/Akt: A Potential Mechanism for the Anti-Glioma Efficacy of a Traditional Chinese Herbal Medicine. *Int. J. Mol. Sci.* **2015**, *16*, 23823–23848. [[CrossRef](#)]
38. Costa, D.C.; Rangel, L.P.R.; Martins-Dinis, M.M.D.C.; Ferreti, G.D.S.; Ferreira, V.F.; Silva, J.L. Anticancer Potential of Resveratrol, Lapachone and their analogues. *Molecules* **2020**, *25*, 893. [[CrossRef](#)]
39. Li, X.; Wu, C.; Chen, N.; Gu, H.; Yen, A.; Cao, L.; Wang, E.; Wang, L. PI3K/Akt/mTOR signaling pathway and targeted therapy for glioblastoma. *Oncotarget* **2016**, *7*, 33440–33450. [[CrossRef](#)]
40. Rhun, E.L.; Preusser, M.; Roth, P.; Reardon, D.A.; van den Bent, M.; Wen, P.; Reifenberger, G.; Weller, M. Molecular targeted therapy of glioblastoma. *Cancer Treat. Rev.* **2019**, *80*, 101896. [[CrossRef](#)]
41. Behrooz, A.B.; Talaie, Z.; Jusheghani, F.; Łos, M.J.; Klonisch, T.; Ghavami, S. Wnt and PI3K/Akt/mTOR Survival Pathways as Therapeutic Targets in Glioblastoma. *Int. J. Mol. Sci.* **2022**, *23*, 1353. [[CrossRef](#)] [[PubMed](#)]
42. Dratwa, M.; Wysoczanska, B.; Łacina, P.; Kubik, T.; Bogunia-Kubik, K. TERT-Regulation and Roles in Cancer Formation. *Front. Immunol.* **2020**, *11*, 589929. [[CrossRef](#)] [[PubMed](#)]
43. Aquilanti, E.; Kageler, L.; Wen, P.Y.; Meyerson, M. Telomerase as a therapeutic target in glioblastoma. *Neuro Oncol.* **2021**, *23*, 2004–2013. [[CrossRef](#)] [[PubMed](#)]

44. Jorge, P.M.; Oliveira, I.M.; Chiela, E.C.F.; Viau, C.M.; Saffi, J.; Horn, F.; Rosa, R.M.; Guecheva, T.N.; Henriques, J.A.P. Diphenyl Ditelluride-Induced Cell Cycle Arrest and Apoptosis: A Relation with Topoisomerase I Inhibition. *Basic Clin. Pharmacol. Toxicol.* **2015**, *116*, 273–280. [[CrossRef](#)]
45. Brazvan, B.; Ebrahimi, A.K.; Velaei, K.; Mehdipour, A.; Aliyari, Z.S.; Ebrahimi, A.; Ghorbani, M.; Cheraghi, O.; Charoudeh, H.N. Telomerase activity and telomere on stem progeny senescence. *Biomed. Pharmacother.* **2018**, *102*, 9–17. [[CrossRef](#)]
46. Dogan, F.; Avci, C.B. Correlation between Telomerase and mTOR pathway in Cancer Stem Cells. *Gene* **2018**, *641*, 235–239. [[CrossRef](#)]
47. Ghareghomi, S.; Ahmadian, S.; Zarghami, N.; Kahroba, H. Fundamental insights into the interaction between telomerase/TERT and intracellular signaling pathways. *Biochimie* **2021**, *181*, 12–24. [[CrossRef](#)]
48. Baliza, D.D.M.S.; Silva, J.F.M.S.; Ferreira, E.M.S.; Ferreira, I.M.; Silva, E.O.; Nascimento, J.L.M.; Pimenta, R.S. Screening of Endophytes for Anticancer Compounds. In *Endophytic Microbes: Isolation, Identification, and Bioactive Potentials*; Springer: Berlin/Heidelberg, Germany, 2022.
49. Livak, K.J.; Schmittgen, T.D. Analysis of relative gene expression data using real-time quantitative PCR and the 2^{(-Delta Delta C(T))} method. *Methods* **2001**, *25*, 402–408. [[CrossRef](#)]
50. Arocho, A.; Chen, B.; Ladanyi, M.; Pan, Q. Validation of the 2-DeltaDeltaCt calculation as an alternate method of data analysis for quantitative PCR of BCR-ABL P210 transcripts. *Diagn. Mol. Pathol.* **2006**, *15*, 56–61. [[CrossRef](#)]

3. CONCLUSÕES INTEGRADORAS

O tratamento com eleuterina apresentou efeito citotóxico e atividade antiproliferativa nas células de glioma e induziu morte celular por mecanismo de inibição da via PI3K/AKT/telomerase. Assim, a molécula eleuterina foi identificada como o principal composto relacionado à indução da morte celular observada nesta linhagem tumoral.

Portanto, os resultados sugerem que eleuterina pode conter um potencial efeito antitumoral em células de glioblastoma. Vários estudos apontam para o papel essencial da investigação de compostos e derivados naturais como fármacos e adjuvantes na abordagem farmacológica de diferentes tipos de tumores. Dessa forma, abre-se a possibilidade da molécula eleuterina como uma opção viável de tratamento do câncer, na qual novos estudos e testes em modelo *in vivo* são de extrema importância clínica e científica.

4. REFERÊNCIAS

ANDOH, T.; ISHIDA, R. Catalytic inhibitors of DNA topoisomerase II. **Biochim Biophys Acta**, 1998, 1400, 155-171.

BARBOSA, W. *et al.* Characterisation of Isoeleutherine in Aqueous Extract of Eleutherine Plicata Herb, Iridaceae, Active Against Entamoeba Hystolitica/ Entamoeba Dispar In-Vitro - **IJPSR**.Vol. 3(4): 1096-1100, 2012.

BORGES, E. S. **Estudos farmacológicos, fitoquímicos e atividades biológicas de eleutherine plicata Herb**. Belém, Pará, 2012. 108f. Dissertação (Mestrado em ciências farmacêuticas) – Instituto de Ciências da Saúde, Universidade Federal do Pará, Belém, 2012.

CAMPOS, A.; Vendramini-Costa, D.B.; Fiorito, G.F.; Ruiz, A.L.T.G.; Carvalho, J.E., Souza, G.M.R.; Delle-Monache, F. Cechinel-Filho, V. Antiproliferative effect of extracts and pyranonaphthoquinones obtained from Cipura paludosa bulbs. **Pharm Biol**, 2016, 54(6), 1022-1026.

CAMPOS, B. *et al.* A comprehensive profile of recurrent glioblastoma. **Oncogene**; v. 35, n. 45, p. 5819-5825, 2016.

CHEN, D. *et al.* New Naphthalene Derivatives from the Bulbs of Eleutherine americana with Their Protective Effect on the Injury of HUVECs. **Molecules**, v. 23, n.2111, p,1-9, 2018.

CHEN, G.; YUE, Y.; QIN, J.; XIAO, X.; REN, Q.; XIAO, B. Plumbagin suppresses the migration and invasion of glioma cells via downregulation of MMP-2/9 expression and inaction of PI3K/Akt signaling pathway in vitro. **J Pharmacol Sci**, 2017, 134(1), 59-67.

COLQUHOUN, A. Cell biology-metabolic crosstalk in glioma. **Int J Biochem Cell Biol**, 2017, 89, 171-181.

GALUCIO, N.C.R. **Estudo de citotoxicidade e genotoxicidade de Eleutherina plicata Herb.**; 2014. Belém. Dissertação (mestrado em Ciências Farmacêuticas); Universidade Federal do Pará, Belém, 2014.

GOMES, A.R.Q.; GALUCIO, N.C.R.; ALBUQUERQUE, K.C.O.; BRÍGIDO, H.P.C.; VARELA, E.L.P.; CASTRO, A.L.G.; VALE, V.V.; BAHIA, M.O.; BURBANO, R.M.R.; MOLFETA, F.A.; CARNEIROH, L.A.; PERCARIO, S.; DOLABELA, M.F. Toxicity evaluation of Eleutherine plicata Herb. extracts and possible cell death mechanism. *Toxicol Rep*, 2021, 8, 1480-1487.

KRISHNAN, P.; BASTOW, K.F. Novel Mechanisms of DNA Topoisomerase I - Inhibition by Pyranonaphthoquinone Derivatives Eleutherin, a Lapachone, and B Lapachone. *Biochem Pharmacol*, 2000, 60(9), 1367-79.

LIVAK, K.J.; SCHMITTGEN, T.D. Analysis of relative gene expression data using real-time quantitative PCR and the 2(-Delta Delta C(T)) method. *Methods*, 2001, 25(2), 402-408.

MALHEIROS, L.C. DA S., DE MELLO, J.C.P., BARBOSA, W.L.R. Eleutherine Plicata – Quinones and Antioxidant Activity. **Phytochemicals – Isolation, Characterisation and Role in Human Health. InTech.**, 2015.

MAUÉS, L.A.L.; ALVES, G.M.; COUTO, N.M.G.; SILVA, B.J.M.; ARRUDA, M.S.P.; MACCHI, B.M.; SENA, C.B.C.; PRADO, A.F.; CRESPO-LOPEZ, M.E.; SILVA, E.O.; DO NASCIMENTO, J.L.M. Flavonoids from the Amazon plant Brosimum acutifolium induce C6 glioma cell line apoptosis by disrupting mitochondrial membrane potential and reducing AKT phosphorylation. *Biomed Pharmacother*, 2019, 113, 108728.

OLIVEIRA, A.B.; DOLABELA, M.F.; PERCÁRIO, S.; Amazon's Medicinal Plants: A New Solution for Malaria Treatment? **Malar. Chemoth. Cont. Elimination** v.3, e.122, 2014.

PEREYRA, C.E.; DANTAS, R.F.; FERREIRA, S.B.; GOMES, L.P.; SILVA-JR, F.P. The diverse mechanisms and anticancer potential of naphthoquinones. *Cancer Cell Int*, 2019, 19, 207.

RHUN, E.L.; PREUSSER, M.; ROTH, P.; REARDON, D.A.; van den Bent, M.; WEN, P.; REIFENBERGER, G.; WELLER, M. Molecular targeted therapy of glioblastoma. *Cancer Treat Rev*, 2019, 80, 101896.

RIBEIRO, C.M.; **Avaliação da atividade antimicrobiana de plantas utilizadas na medicina popular da Amazônia**. 2008, 17f. Dissertação (Mestrado em Ciências Farmacêuticas), Universidade Federal do Pará, Belém, 2008.

RODRIGUES, A.P.D.; CARVALHO, A.S.C.; SANTOS, A.S.; ALVES, C.N.; DO NASCIMENTO, J.L.M.; SILVA, E.O. Kojic acid, a secondary metabolite from *Aspergillus* sp., acts as an inducer of macrophage activation. **Cell Biol Int**, 2011, 35(4), 335-43.

SCHWARTZBAUM, J.; FISHER, J.L.; ALDAPE, K.D.; WRENSCH, M. Epidemiology and molecular pathology of glioma. **Nat Clin Pract Neurol**, 2006, 2(9), 494-503.

VALE, V. *et al.* Naphthoquinones isolated from *Eleutherine plicata* herb: in vitro antimalarial activity and molecular modeling to investigate their binding modes. **Med. Chem. Res.** v. 29, p. 487–494, 2020.

WEN, P.Y.; KESARI, S. Malignant gliomas in adults. **N Engl J Med**, 2008, 359(5), 492-507.

ZAMAN, M. A.; BEGUM, R.; SAHA, G. R. Karyomorphology and Chromosome Behaviour of a form of *Eleutherine Plicata* Herb. (Iridaceae) with an Aberrant Chromosome Number and a Pericentric Inversion. **Caryologia: International Journal of Cytology, Cytosystematics and Cytogenetics**, v. 38, n. 2, p. 207-211, 2014.